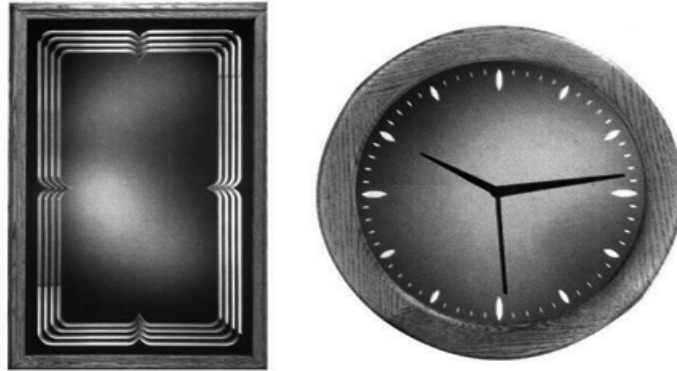


## Arch Deco Glass® V-Grooved Glass

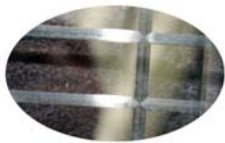


Arch Deco Glass® has state of the art glass fabricating equipment located in Columbus, OH, Salt Lake City, UT, as well as all other Arch Aluminum & Glass manufacturing facilities located throughout the United States.

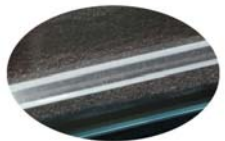
Our CNC V-Grooving equipment is capable of producing custom engraved designs (commonly know as V-Grooving), with different profile engraving tools. V-Grooving can be done on any architectural flat glass and mirrors. V-Grooved glass can also be heat strengthened, tempered, and laminated. Custom profiles are also available, contact Arch Deco Glass for more information on custom profiles and tooling costs.

Thickness ranges from 1/8" (3.2mm) up to 1/2" (12mm).

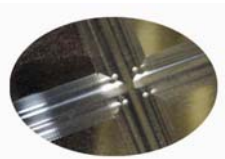
Maximum Size is 56" (1422mm) X 108" (2743mm)



3/16" (5mm) Polished V-Groove (pictured)  
3/16" (5mm) Frosted V-Groove



3/8" (10mm) Polished V-Groove  
3/8" (10mm) Frosted V-Groove, commonly used as a plate groove.  
3/8" (10mm) Silhouette V-Groove (pictured) 3/16" Polished Center



3/4" (19mm) Polished Muntin Profile Groove (pictured)  
3/4" (19mm) Frosted Muntin Profile Groove

3/4" (19mm) V-Groove, not shown  
3/4" (19mm) Flat Bottom V-Groove (shown at right)

